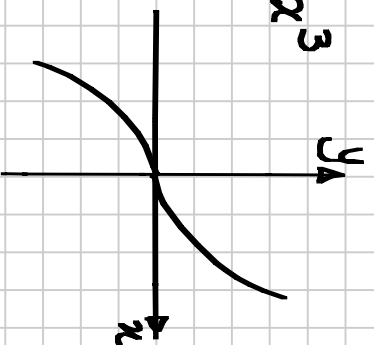
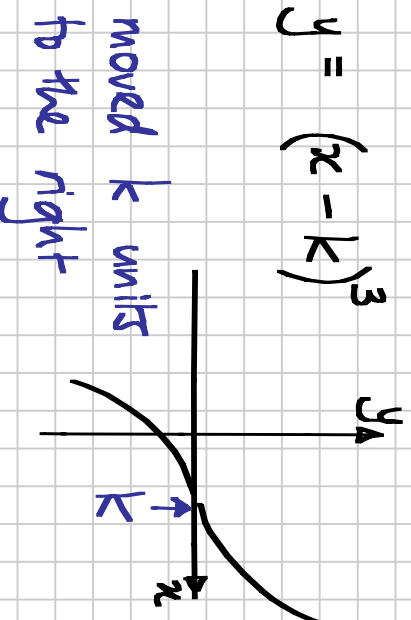


C1 section 4.2 (binomial cubed)

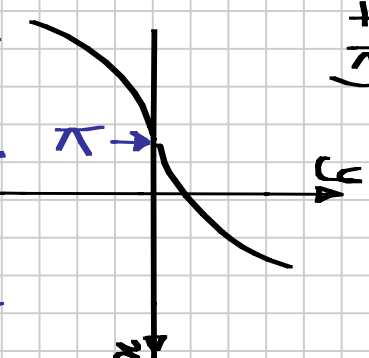
$$y = x^3$$



$$y = (x - k)^3$$

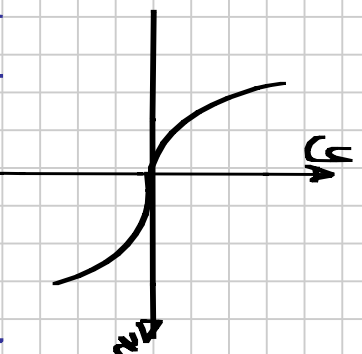


$$y = (x + k)^3$$



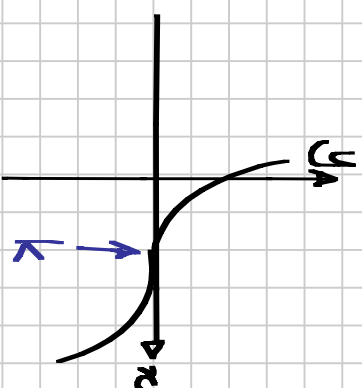
moved k units to the left

$$y = -x^3$$



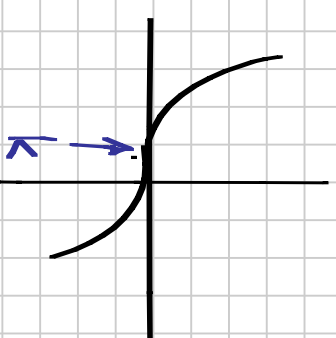
reflects in the x -axis

$$y = (k - x)^3 = -(x - k)^3$$



reflected and moved k right

$$y = -(x + k)^3 = (-x - k)^3$$



reflected & moved k left